

KMFA Statement of Organization

The Kyrene Music and Fine Arts Association (KMFA) is a non-profit organization comprised of parents, community members and fine arts educators in support of a complete music, visual and performing arts education program for all schools in the Kyrene School District No. 28.

KMFA Philosophy

KMFA will work with district music and fine arts educators and administrators to develop levels of delivery in music and fine arts education and monitor progress to meet national standards for music and fine arts education as stated in Goals 2000. KMFA supports an equal opportunity for every student to fully participate in the music/fine arts experience.

* * * * *

**KMFA's phone number is
898-5665, ext. 7206.**

**Visit the KMFA web site at:
www.kmfa.net**

KMFA GOALS

Team with Music/Fine Arts Educators to determine the position of the Kyrene School district music/fine arts programs relative to Goals 2000, prioritize needs, and act as advocates to improve the programs.

- Establish commitment on the part of state legislators, school board members and district administration to all aspects of music/fine arts education.
- Support of teacher specialists at the district level for music/fine arts.
- Establish understanding of the need for music and fine arts at appropriate grade levels taught by content specialists.
- Work with the district administrators and fine arts steering committee to jointly develop mission statements, outcomes, evaluation vehicles, equitable scheduling and resource allocation.

KMFA meets monthly at the Furlong Education Center. Call the 898-5665, ext 7206 or check our web site for the next meeting date.

Yes!! I want to be a force for effective music and fine arts education in the Kyrene School District.

Please indicate the level of your membership support.

I would like to be a general member, enclosed is \$5.00.

I would like to be a patron member, enclosed is \$25.00.

I would like to be a lifetime member, enclosed is \$50.00.

I would like to contribute \$_____ to KMFA.

I am not able to make a contribution but include me on the mailing list.

Please contact me, I would like to help as a volunteer.

KMFA is a non-profit organization; all contributions are fully tax deductible.

Name: _____

Address: _____

Phone: _____

Children's Names: _____

Parent's Occupation: _____

Email Address: _____

Return this form and your check (payable to KMFA) to:

**Kyrene Music and Fine Arts Assoc.
8700 S. Kyrene Road
Tempe, Arizona 85284-2197**

**KYRENE SCHOOLS MUSIC AND FINE
ARTS ASSOCIATION (KMFA)**

Organized in 1994, with the backing of the School Superintendent, the Kyrene Schools Music and Fine Arts Association (KMFA) is a forum of parents, teachers and community members.

KMFA is an advocate and lobbying force for comprehensive music and fine arts education - at the individual school and district level.

KMFA is not a fund raising group. Your membership dues pay for printing, postage and special award or recognition activities.

KMFA is encouraging the formation of support groups at each of the elementary and middle schools.

KMFA Chairman

Randy Clawson

Telephone 786-1572

email: RCLAWSON@apsc.com

KMFA Vice-Chairman

Craig Erwin

Telephone 940-1472

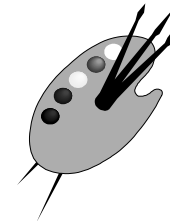
email: cerwin@home.com

Kyrene Music and Fine Arts Association
8700 S. Kyrene Road
Tempe, AZ 85284-2197



KMFA

**Kyrene Music and
Fine Arts
Association**



**Visit KMFA on the Web at:
www.kmfa.net**

